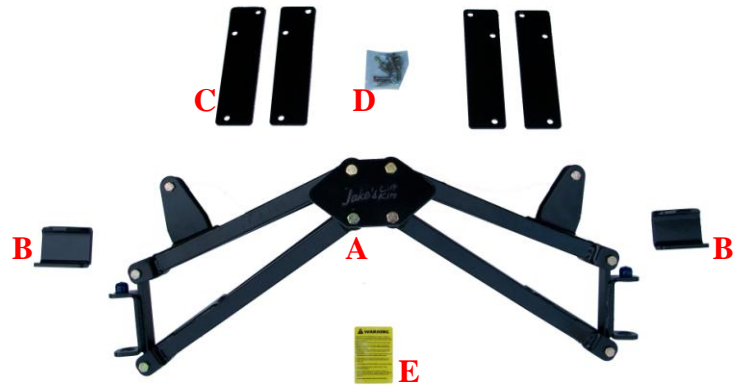


Yamaha G2/9 7" Lift Kit Installation Instructions Part# 7407



Parts List

- A- Front Lift Assembly-1
- B- Steering Risers-2
- C- Rear Riser Plates-4
- D- Hardware Kit For Rear Lift-1
- E- Warning Label-1



FRONT INSTALLATION

1. Remove the front bumper.
2. Raise the front of the car and place it on jack stands. You will be installing larger wheels & tires so raise the car high enough to accommodate additional height.
3. Remove both the front wheels.
4. Remove the cotter pins and bolts from both the left and right steering arms.
5. Use a drift punch to drive the split roll pins out of the spindles. Keep the drift pin for reinstalling the spindles. Remove the kingpins & stock washers and clean and lubricate them for reinstalling the spindles. Remove the spindle from the stock A-arms.
6. Remove the lower shock bolts.
7. Remove the cotter pins and bolts from the stock A-arms. Remove the stock A-arms. The front suspension is completely disassembled as shown in Figure 1.
8. Remove the supplied metric bolts from both front and back top inner a-arm mounts from the front lift assembly ITEM A as shown in Figure 2.
9. Using the supplied metric bolts & locknuts loosely install both front and back top inner a-arm mounts to the stock a-arm mounting location as shown in Figure 3.
10. Using the supplied 3/8 x 2 bolts and locknuts mount the bottom of the stock shocks to the new shock mount location as shown in Figures 3 & 5.
11. Using the stock kingpin, washer and split roll pins re-install the stock spindles to the lift kit as shown in Figure 4 & 5.



Figure 1



Figure 2

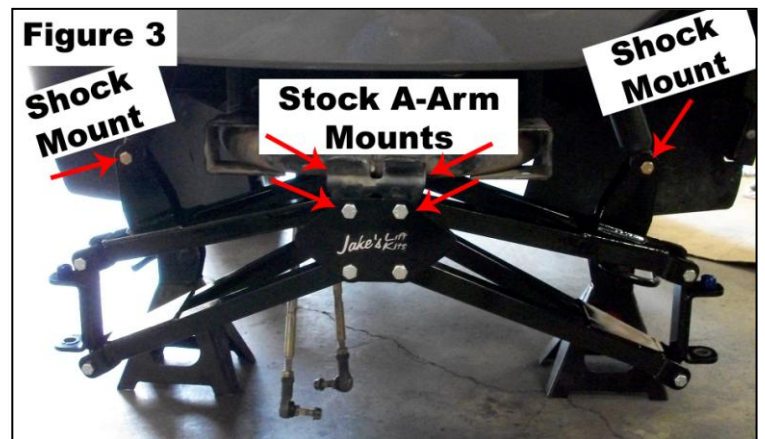
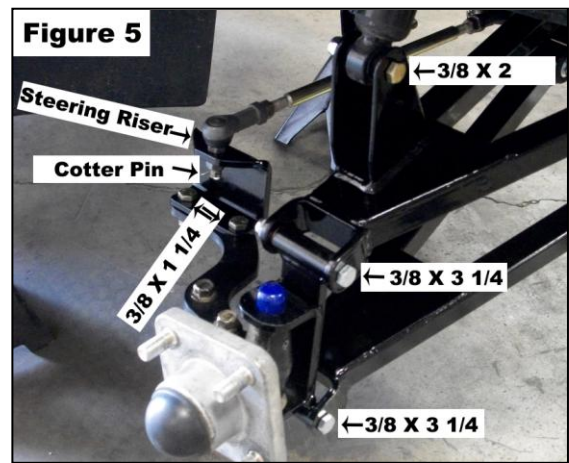
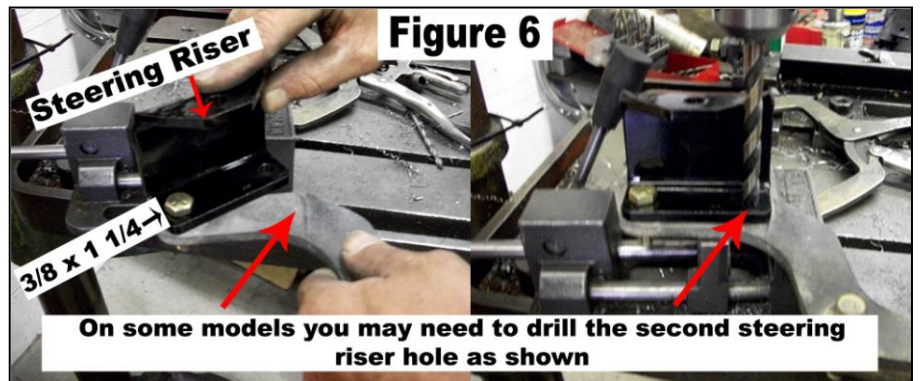


Figure 3

12. Using the supplied 3/8 x 1/14 bolts install the new steering risers ITEM B to the stock steering arms as shown in Figures 5 & 6. **NOTE: The steering risers are not side specific. On some models you may need to drill (3/8 DRILL BIT) the second hole in the stock steering arm as shown in Figure 6.** Attach the stock tie rod end to the steering riser using the stock nut and supplied cotter pin. Securely tighten all bolts.

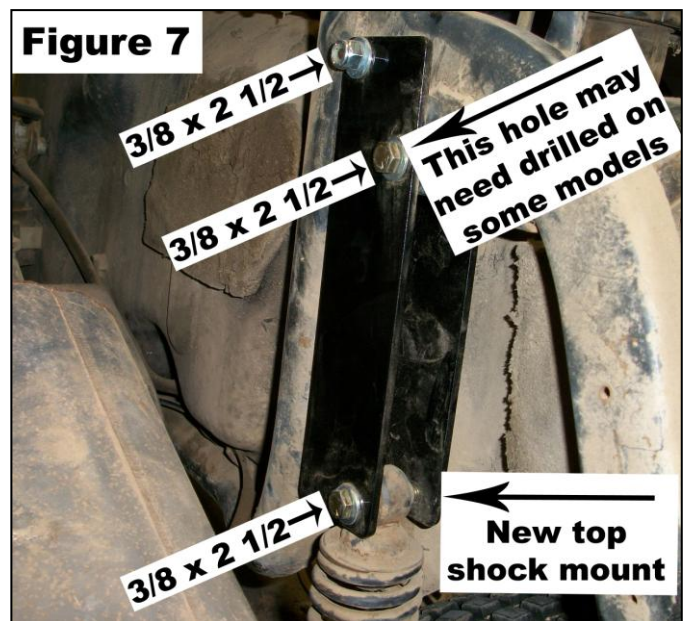


13. Install JAKES recommended wheel and tire size (22 x 11 x 10 tire and 10" rim with 3 x 5 offset) for maximum stability.
14. Take the cart off of the jack stands and lower the car.
15. Adjust toe-in to approximately 1/8" in after rear lift is complete. Toe must be visually looked at while one person is driving the cart sitting in the center of the seat driving 15-20 feet toward mechanic. Adjust the toe according to what was seen. Repeat procedure after adjustments are made to re-check toe-in.
16. Reinstall the front bumper.



REAR INSTALLATION

1. Disassemble the rear body section.
2. Jack up the car and place it on jack stands. You will be installing larger wheels and tires so raise the car high enough to accommodate the additional height.
3. Remove the rear tires.
4. Unbolt the top shock mounts.
5. Bolt JAKES rear risers (ITEM C) to the top stock shock mount location using the supplied 3/8 x 2 1/2 bolts as shown in Figure 7. The top bolt enters from the outside of the bracket. **NOTE: Some models may need the 2nd hole drilled (3/8" drill bit) through the frame. Make sure gas tank and wiring are not contacted when drilling.**
6. Reattach the top of the shocks to the new shock mounts on JAKES rear mounts (ITEM C).
7. Install JAKES recommended 22x11x10 wheels and tires with a 3x5 offset for maximum performance and stability. **NOTE: Your stock wheels and tires will NOT work!**
8. Reassemble the rear body.
9. Place the warning label (ITEM E) on the steering column or visible area to be read by any and all operators.



NOTE: Some models may need the inner fenders heated, reformed or cut for tire clearance. If you install 22" or taller tires you may need to cut off 1" from both side rocker panels in front of the rear tires.

Indemnification And Insurance Agreement

High Performance Enhancement Kit purchaser assumes sole and entire responsibility for, and shall indemnify and save harmless Nivel LLC, from any and all claim, liability, responsibility, and persons or property that may be sustained in connection with the use of any product before or after purchase, including but not limited to high performance enhancement lift kits. The High Performance Enhancement Kit purchaser also shall indemnify Nivel LLC harmless with respect to any and all liability that may be incurred.

Golf Cars are recommended for use only by those aged 16 and older. Golf Cars can be especially hazardous to operate. Always remember that riding and alcohol/drugs don't mix. Never ride on public roads. Never carry more than two passengers (except shuttles and trams). Never engage in stunt driving. Avoid excessive speeds and be particularly careful on difficult terrain. Nivel LLC reserves the right, at any time, to discontinue or change specifications, prices, designs, features, models, or equipment without notice and without incurring any obligation.